



The Canterbury Potter

OFFICIAL NEWSLETTER OF THE CANTERBURY POTTERS ASSOCIATION | **ISSUE 1 2022**

President's Report

We have had a very exciting start to the year at CPA.

A big thank you to all our members who turned out to help with the working bee, the rooms and grounds were given a very good annual spruce up. Our front-loading kiln is up and running and will be available to members to use very soon. The new layout of the rooms is very refreshing, it has been given the seal of approval from many of our members. Thanks to those who wrote in, specially, to comment, the team really appreciates the positive feedback.

There will be some exciting workshops coming up this year, starting off with our very popular tutors workshops, check out the details later in this newsletter. Your committee is busy keeping the club running; next week we get together for the annual strategic meeting where we put our long-term plan in place, our wish list of things to do to improve the clubrooms, the equipment that will need to be replaced at some stage and general plans for all repairs and maintenance needed to keep everything safe. I would like to say a special thanks to the hard working committee of CPA all who do their roles on a voluntary basis and so happily! Without them CPA would not function so well.

Nicole is saying goodbye to the committee, for the time being, to take time out to travel overseas. We wish Nicole safe and happy travels and thank her for the huge contribution she has made to CPA.

Please remember we are still in Covid territory, sign in, scan our QR code and wear a mask while in the rooms.

Happy potting!

Trish

WELCOME TO OUR LATEST MEMBERS

Yann Moutelle, Jose Douglas, Rebecca Hall, Elizabeth Green, Fritha McCrimmon-Robinson, Jessica Cronje, Margaretmary Comeskey, Kaye Curgenuen, Nina McCullum, Scott Osborne, Samantha Stokes, Caroline Sleigh, Anya Besley, Katie Bromley

CPA COMMITTEE 2021-2022

Trish Morant **President**

Andrew McKaskell **Vice President**

Angela Williams **Secretary**

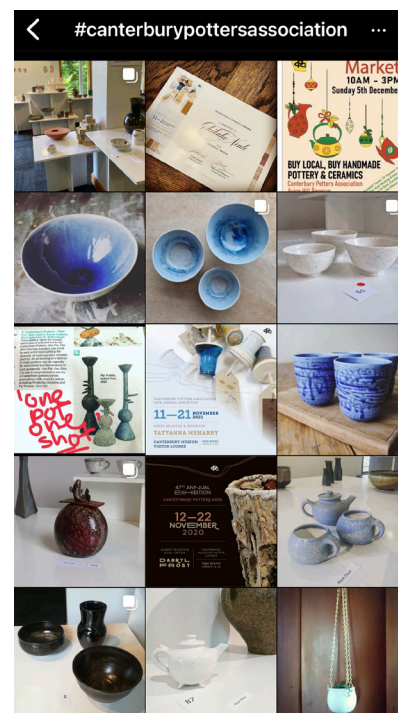
Ann Goldfarb **Treasurer**

Committee

Mary Lou Foate, Molly Hindman

Ngarita Wight, Nicole Wu

Pat Alexander, Penny de Jong



Send in your photos!

We would love to share your work on our social media pages!

Send us your photos of pottery activities, works in progress, finished pieces, or any exhibitions you may be involved in.

You can submit any photos or short videos to canterburypotters@gmail.com. Please include your instagram tag (if you have one) and a short description of the image.

*If your images contain other people and club members, please make sure you get their permission before sharing or posting these.



Pimp My Clubroom

A small change, like getting a new kiln can cause all sorts of creative thinking. Exactly so with our new front loader kiln, shelves need to be moved to put the kiln in place and one thing leads to another. Thanks to Pat and Leanne for painting the shelves for our bisque ware and glaze pieces, it looks very smart. The new layout in the clubrooms has created a more welcoming entrance and better utilises the space, with equipment where it is more logically used. We have moved the glaze pieces once they are fired to the shelves beside the fired bisque ware which has freed up the back shelf for wheel workers to use while they are working. Special thanks to Leanne for designing all the new signage throughout the rooms. We hope you enjoy this new look and find the rooms more inviting.

The Kids Are Back!

And having fun in class on Thursday afternoon, thanks to Kay.



“

I noticed the changes of the setup, and would like to ask you to relay my compliments and gratitude to all that worked so hard to make those changes. The room is looking fabulous and the reallocation and relabelling of shelf space, the change of the work spaces, etc. etc. really made a positive difference, and I acknowledge and appreciate the effort.

“

Hi Committee

*Just wanted you to know how nice and refreshing the studio is looking with the new layout. The Saturday morning people all thought how fantastic it was looking. And, of course, thanks for the hard work taken to get the new kiln in place. It looks great and I'm really looking forward to using it!
Thanks for all your hard work*

“

*To those involved...
The different set up of the studio looks fantastic. Well done to those involved especially the muscles who moved the new kiln into place you are amazing. It was so refreshing to come in today and see the well thought out changes.*



Testing Testing!

Towards the end of last year we welcomed two new kilns to our clubrooms. Kiln 3 is a new, updated version of the old Cobcraft kiln. It has worked hard, with no problems, from the moment it was installed.

Kiln 1 however, is a front-loading kiln and is quite different from any electric kiln we have had before.

Its weight and ventilation specifications caused considerable headaches with its installation but it is now settled in its corner.

So far it has performed two bisque and two cone 6 firings with perfect results. It has proved to be easy to load and although smaller inside, it can take a surprising amount of work. It even has a function enabling us to digitally record each firing - so some interesting stats will be available down the line. It will be a real asset to our club.

BEFORE BOOKING KILN 1 YOU'LL NEED TO HAVE HAD A QUICK CRASH COURSE WITH TRISH OR MARY LOU

TOP L-R Our sparky Scully's son de-wiring the old kiln; temporary Kiln 1; the movers doing the hard stuff.

BOTTOM L-R Nearly there; our wonderful sparkies came back the same day to wire in the new kiln; and our lovely kiln coordinator, Mary Lou, loading the first bisque firing.

CLUB MINI COMPETITION

We need a name for our gorgeous new kilns (and the others for that matter!) - Kiln 1, 2 and 3 doesn't really cut it anymore!

Come up with a suitable name and you will get bragging rights!

Email your suggestions to the committee with 'name that kiln' in the subject.



PLEASE NOTE

ROOMS WILL BE UNAVAILABLE ON FRIDAY 11 + 18 MARCH | 5PM-9PM



WANTED! EXHIBITION CONVENOR

We are seeking expressions of interest for the role of exhibition convenor for our 49th exhibition.

This is a very rewarding role, with the culmination of seeing our annual exhibition come to fruition. We'd like someone who can lead a small team of exhibition committee members and who has great organisational skills. Support for the role will be provided.

Get in touch if you have any questions.

WANTED! MEMBERSHIP SECRETARY

Keen to meet new members and chat everything CPA?

The membership secretary is a very rewarding role in CPA. You'll be keeping membership records up to date, communicating with new members as their applications come in, and presenting them to the committee for approval.

Interested? Contact the committee, we'd love to hear from you.

CLAY

We are currently stocking all cone 6 clays, there are a few bags of SC80 and Slab as well. While these clays do not vitrify at cone 6, they are perfectly good for sculptural work or work that is not intended to hold water or food.

SHUT THAT WINDOW!

Please remember to close any windows you open before you leave the clubrooms, there has been a spate of windows being left open lately!



If you open a window write a note and put on the sign in/out book, you'll see it when you leave - easy!

REMINDER SUBS DUE BEGINNING OF APRIL

LOST PROPERTY

We now have a lost property box! If you find any items left in the rooms please put into the box for the owner to collect. The plastic lidded box is stored under the hand basin in the toilet area (no wet items for CPA members!).

COOL NZ CERAMIC FACEBOOK GROUPS

For those who want some technical info about anything to do with clay, equipment or just troubleshoot a problem and share their knowledge of studio pottery, there are a couple of New Zealand facebook pages that are fantastic to post a query or a picture of an unknown piece of pottery you may have.

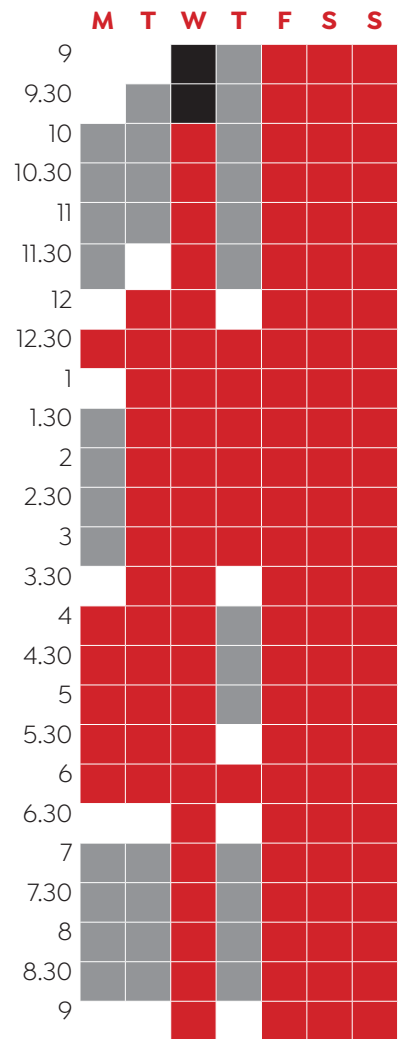
Search:

- New Zealand Studio Pottery
- New Zealand Studio Pottery
- Technical

ROOM AVAILABILITY

The red areas in the timetable below are when the rooms are available for members to work and collect fired pieces. Please respect the tutors and students and don't 'just pop in to collect my fired pieces' during class sessions.

Generally, the rooms can be accessed during term breaks but please check the calendar on our website for meeting times, workshops, when the rooms are unavailable, and other events that are happening in the CPA.



- ROOMS AVAILABLE
- CLASSES
- ROOMS BEING CLEANED



RAKU RESULTS!



**KEEP AN EYE
OUT FOR THE
NEXT RAKU DAY
- COMING TO
YOU IN JUNE!**

COOKING WITH GAS!

The gas firing group is planning for **Sunday 8 May** for its next firing. Let us know if you would like to join us and, learn about gas firing. Please email canterburypotters@gmail.com with GAS GROUP as the subject.



ONE WEEKEND | FOUR WORKSHOPS

SATURDAY 30 APRIL + SUNDAY 1 MAY

SATURDAY

COMBINING BLACK AND WHITE CLAY (PARTICIPATION)

HUGH RICKARD

9.30am–12.30pm

Hugh will demonstrate his take on combining black and white clays - with throwing a bowl on the wheel.

This is a different approach to combining and blending two very different clays—Primo black and mid fire white porcelain—to stunning effect.

Then students will get the opportunity to try this technique for themselves.

Participants need to be able to throw a basic bowl.

If you do wish to hand build - that can be accommodated, but you will need to bring a hollow plaster mould.



3D DESIGNS ON CLAY (PARTICIPATION)

MARY LOU FOATE

1.30–4.30pm

Mary Lou will teach participants to create 3D designs, using tools, on a flat surface and a round ball.

SUNDAY



CLAY SURFACE TREATMENT

(PARTICIPATION)

JANE MCCULLA

9.30am–12.30pm

Jane is going to teach clay surface treatment – texturing clay, dry brush slip application and china clay additions to the clay surface.

Once the slab has been textured and stretched the participants may wish to construct a hand built form or vessel. Jane will show how she hand builds a slab form.

Suitable for all levels of experience.



HANDLE & FEET

(DEMO, DISCUSSION, PARTICIPATION)

ALYSE OLIVER

1.30–4.30pm

Participants will get to watch an in-depth demonstration of several techniques where questions and discussion are encouraged. They will have a go themselves at making additions to form with handles/feet. A focus on technique will be foremost, but a discussion around making aesthetically pleasing choices will be prompted (eg a badly placed handle can ruin a nice pot!)

Beginners welcome but must have done some pottery already. Must have an understanding of leather hardness in clay as this is vital for preparation for the workshop.

Choose one or all four to suit your interests

Each workshop is \$50 or \$180 for all four | Tea and coffee provided

Please bring your own lunch if you are attending both workshops on either day.

Interested in coming? Book now as numbers are limited!

To book your place, email canterburypotters@gmail.com with **One Weekend** in the subject line and tell us which workshop you are signing up for and we will reply with payment details.

Your place is confirmed when payment is received.

A list of items you need to bring will be emailed to you.