

# The Canterbury Potter

Newsletter of the Canterbury Potters Association

April – June 2020

## ANNUAL AUCTION

**Sunday 28 June, 2.45pm  
(after the AGM)**

**CROISSANTS!**

**COFFEE!**

**AUCTIONEER ALEX PRENTICE!**

This is our only fundraiser for the year, and we rely on your bids, and your donations of pottery-related items. (Tools, books, clay, materials etc.) We also welcome garden produce, preserves etc. We have:

- a cowley wheel,
- an extruder,
- books and magazines,
- glaze material,
- glaze equipment,
- jams,
- walnuts,
- raku kiln,
- thick card for templates,
- ceramic pieces donated by Rosemary Perry (some of these have a reserve on them),
- pottery items from another local collector,
- numerous other pottery-related bits and pieces...

We still need more items to auction. Please have a look and see if you have anything others might use or value - leave them in the office, or bring on the day. Proceeds go to purchasing replacement and new equipment for the club.

Come for croissants, coffee and a catch-up at 1.30pm, hear what we are up to at the AGM and let us know if you'd like to get more involved.

**More information on the AGM inside...**



# WHAT'S ON

## WHAT'S COMING UP

---

### **AGM**

**Sunday 28 June 2 pm**

Come at 1.30 for croissants, coffee and a post-lockdown catchup.

The CPA is an incorporated society run by members for members. To continue to provide ideas, equipment, events and day to day administration, we need more people to help on the committee. Please consider joining us. Email us at [canterburypotters@gmail.com](mailto:canterburypotters@gmail.com) to find out more about how you can contribute to our club.

### **Raku firing group**

**Sunday 16 August 10am.**

\$10.00 per person. Bring bisque pieces and your lunch.

### **Mid winter bowl swap and soup night**

**Wednesday 15 July 6.30pm**

This is a lovely way to spend an evening with new and old friends, and take home a handmade souvenir. Bring a handmade bowl to swap – one you have made, an op shop treasure, or one that's lurking at the back of the cupboard.... Have a catch up with other potters, then enjoy some delicious soup with us. (vegetarian/vegan/gluten-free options included) and bread.

Soup and bread provided – please consider bringing something sweet to share for afters!

### **CPA 47th Exhibition**

#### **Receiving day**

**Thursday 8 October 11am - 1 pm and 6 - 8pm**

#### **Selection day**

**Friday 9 October - no access to rooms all day**

#### **Guest Selector/Exhibitor's talk**

**Friday 9 October 7 – 9pm.**

Hear Darryl Frost talk about his background, his influences, and his work past and present.

\$10.00. Tea, coffee and cake provided.

#### **"Pushing the Boundaries" workshop with Darryl Frost**

**Saturday 10 and Sunday 11 October 9.30am - 3.30pm both days**

Note that this workshop will operate as two separate days. Come to either one or both. Details, costs, what to bring will follow soon...

### **CPA 47th Annual Exhibition at Canterbury Museum**

**Opening night Wednesday 11 November 6-8pm**

**Exhibition runs from Thursday 12 November to Sunday 22 November**

# THE LOWDOWN

## THINGS YOU NEED TO KNOW

---

### **Help Wanted!**

As our membership expands, so too does the workload. When you filled in your subscription renewal form, you will have noticed we asked you how you are able to help us. We hope you will consider giving something of your time, knowledge and skills. As a voluntary organisation, we depend on the good will of our membership to keep things running. If you didn't return the form, please email it to us, or just email the club to let us know how you can help.

**Newsletter Editor** – Someone to organise, edit and lay out our quarterly newsletter.

**Grants Applications** – We're also looking for someone with experience or interest in grant applications to support the purchasing of new equipment and resources for the club.

If you're interested or know someone who is, please get in touch before the AGM on June 28<sup>th</sup>.

### **Subscriptions Due**

Annual subs were due on 1 April 2020. If you haven't paid, we would appreciate your payment as soon as possible. (As an extra incentive to pay, subs go up \$10 on 30 June.) Please fill out the renewal form and return by email, or drop it in to the clubrooms. If you do not wish to continue your membership, please let us know.

### **Access to the rooms**

Since the lockdown, we have changed the access code for the clubrooms. If you have paid your sub, and the fee for access, please contact Trish or Ngarita to get the new code.

### **New clubroom layout**

We hope you are enjoying our new clubroom setup. We now have a dedicated glaze making room and spray booth with the glazes in the main studio. We have had very positive feedback, but please get in touch if have any other ideas. (We will finalise a comfy reading/seating area soon.)

### **Sign in**

Please remember to sign yourself in and out when entering the rooms. This is still an important requirement for potential contact tracing, for the foreseeable future.

### **Welcome New Members!**

Two new members: Penny Belworthy and Evan Sheridan. Please make them welcome!

### **Keeping it clean**

The kitchen is open again, but you might want to continue to bring your own cup. Wash any dishes you use with HOT water and detergent. Bring your own hand towel, and other towels for cleaning your wheel and work area when you have finished. There are also plenty of paper towels in the clubrooms.

---

### **UNDERSTANDING GLAZES WITH HUGH RICKARD – STILL SPACES AVAILABLE**

Developing glazes to enhance ceramic work is often viewed as a complex and confusing task. In this course we look at the basics and methodology required to develop glazes; students can apply these to their own work. Rescheduled to start on Friday 24 July. Contact Hugh directly for more information. [hugh.rickard1@gmail.com](mailto:hugh.rickard1@gmail.com). \$150 plus costs for firing and materials.

# CPA 47<sup>TH</sup> ANNUAL EXHIBITION 2020

## CANTERBURY MUSEUM

---

**Opening night Wednesday 11 November 6-8pm**

**Exhibition Thursday 12 November - Sunday 22 November**

Time to get cracking on your work for the exhibition! Don't forget that all awards carry a prize, including our Avice Hill Award for first time exhibitors.



---

### **ANNOUNCING OUR GUEST EXHIBITOR AND SELECTOR: DARRYL FROST**

We are delighted to announce that Darryl has agreed to join us for this event. He is a respected artist in steel, stone, glass and ceramic, working from his gallery and workspace, Frost & Fire in Tasman, near Nelson, where he operates two anagama kilns.

Darryl's work is a tactile and intuitive response to his surroundings, a homage to the interplay of the elements. When Darryl's pieces are unveiled from his kiln the true beauty is revealed, altered and twisted; the raw materials shaped by man and fire.

Some of you will recall his workshop at CPA some years ago, where he cajoled us all out of our comfort zone, to break the rules and challenge our thinking. His two day workshop titled "Pushing the Boundaries" promises more of this!!

---

## **HERE ARE THE PEOPLE MAKING IT HAPPEN:**

---

### **Presidents (we have two!):**

Ngarita Wight – 022 632 9186

Trish Morant – 021 0222 1224

**Secretary:** Grace Campbell

**Membership Secretary:** Trish Morant

**Treasurer:** Ann Goldfarb

### **Committee:**

Lorraine Bonisch, Jacqui Overton,  
Angela Williams, Donna Willocks,  
Mary Lou Foate

### **Past President & Clay Manager:**

Darren Saunders

### **Tutors:**

Michael Michaels – 021 076 4643

Frederika Ersten – 03 313 6509

Margaret Ryley – 03 313 8406

Jane McCulla – 022 635 3911

Hugh Rickard – 03 326 4255

Alyse Oliver – 021 110 3552

Mary Lou Foate – 03 355 5968

Andrew Carran – 021 0265 5395

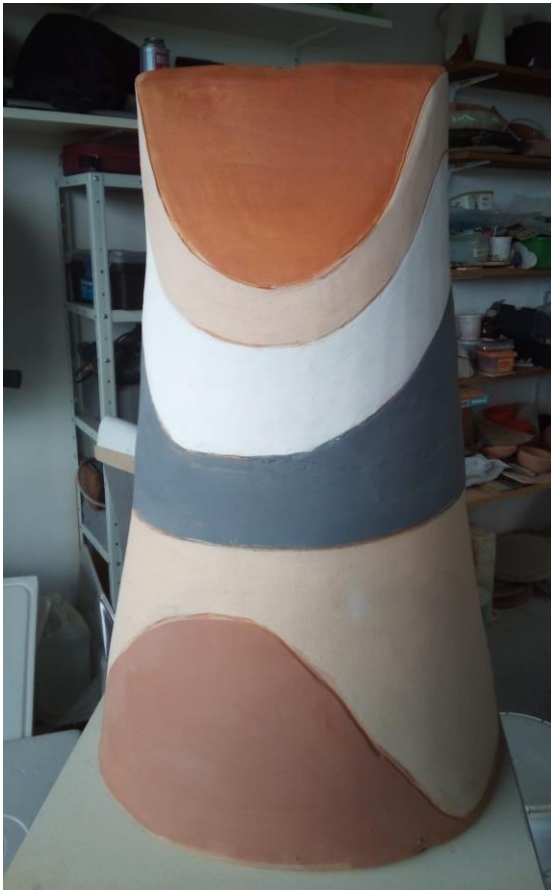
Melanie Davies – 021 182 3850

# PHOTO GALLERY

## WHAT WE GOT UP TO DURING LOCKDOWN...

Here's what we've been doing months, as we worked from home, looked after children and supported their learning, returned to work, been resourceful, took up new hobbies and made things with clay.

### ANDREW CARRAN

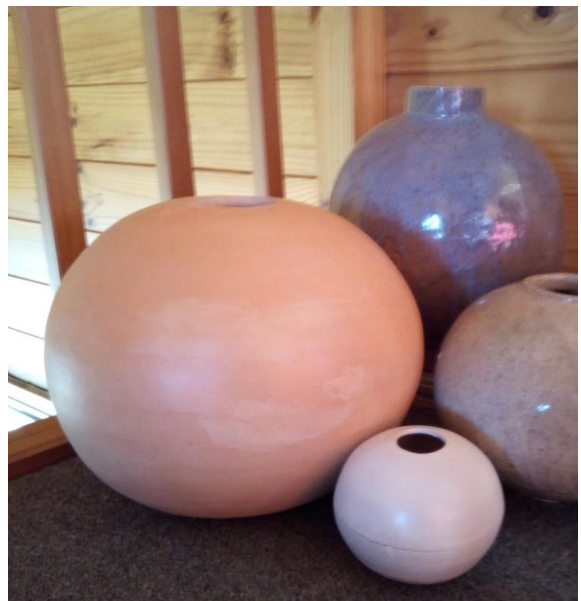


*"When I saw the touring exhibition "Japanese Pottery. The rising generation" at the Aigantighe Gallery in Timaru several years ago, I was profoundly impressed by the control of form in large scale handbuilt works. A piece that particularly interested me was "Song of the wind" by Ichino Masahiko. It appeared beautifully simple but subtle complexities started to emerge when I asked myself how I would attempt to build one as a skill-building exercise.*

*Time passed, but this project continued to nag away and last December I prepared a big batch of red clay from a motley collection of bags and buckets I had inherited a decade ago. In February I established the elliptical base and built coils up about 200mm. Then it went to my Saturday morning class and everybody built in a coil which took it to the final shaping stage which completed along with the slip painting.*

*It's difficult to get a feel for big building within the confines and timelines of classes but this project was a good first step. It has been bisque fired and is about 700mm tall. I hope to fire it to 1120 soon"*

*There was quite a lot of clay left over and that was converted into a "bushfire moon jar" during lockdown. In January I watched the full moon rise through the bushfire smoke and thought a red clay jar could be an interesting contrast to the traditional Korean porcelain and celadon jars.*



## HUGH RICKARD



Hugh got productive in his studio at home.

## ALYSE OLIVER



*"I have mostly been working on nesting bowls and cups (alongside other things). It has been a great time to set up and wear in the new studio after moving late last year. Finally grateful for all the clay I had to recycle as it meant I had plenty to work with!"*



## WHAT WE GOT UP TO DURING LOCKDOWN...



### BARB GAETH

*"I've been busy over lockdown and here are some pieces that have appeared on my bench."*



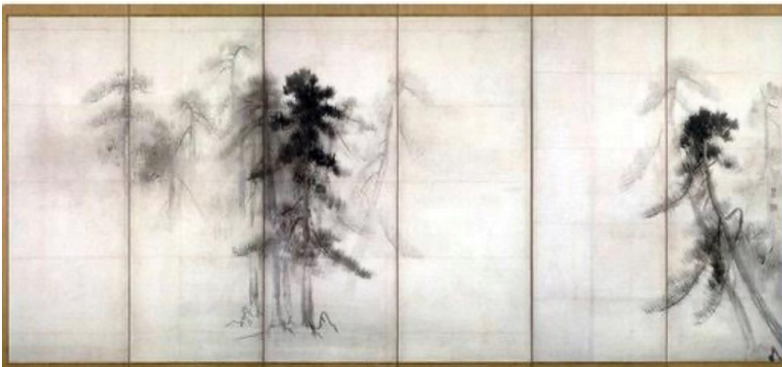
### NGARITA WIGHT

*"In between working at my day job through lockdown at home, I decided to see if I could remember how to use the wheel and centre clay."*

*"I am not usually a thrower and it just sort of came back to me... muscle memory is a wonderful thing!"*



## TAKAAKI SAKAGUCHI



*"Taking a long time to make this. Making shape and making glaze, without having the right tool."*

*"This concept comes from my favorite Japanese painting by Touhaku Hasegawa.... Pine trees."*

## TRISH MORANT

Trish has been busy glazing.





## JANE MCCULLA

*For the duration of Covid-19 Lockdown level 4, each day for 33 days, I made a little ceramic "House on a Rock in Lockdown" twig vase.*



*To me, a house is a home and a place I feel safe, we were all told to stay home, in our bubble. The rock symbolizes a stable, strong foundation.*

*Every day on my walk I would pick a twig from a hedge around Diamond Harbour, then take a photo of it in the greenware vase I constructed.*

*There are 33 twig vases, posted daily onto my instagram story. I intend to try and propagating some of the twigs I picked, to have them grow in my garden, a positive memory of my time during lockdown. The photos are all of unfired clay House on a Rock twig vases. Now I am doing glaze tests to decide how to glaze and finish them.*



*Each day I would number the base and write a daily diary - whatever the news or feeling was that particular day - on the base of the little twig vases. Some days I was more upbeat than others, one base stated, "Day 13 Lockdown comforting to be informed each day Jacinda told us the Easter bunny would still come Yay".*