



The Canterbury Potter

Newsletter of Canterbury Potters' Association

395 Memorial Avenue, PO Box 29424, Riccarton 8041

canterburypotters@gmail.com

FROM THE PRESIDENT

President's speech AGM June 27 2018

It was the best of times, it was the worst of times... this year has been a little like the opening line of a tale of two cities.

We have this year seen the unfortunate passing of long time members Terry Gallie, Steven Dench, Janet Fallow and Gary Laurie (Lorraine partner). Terry of course had been CPA president and took the Tuesday evening classes and Steven in addition to producing very admirable pieces, Raku kilns and settling tanks will be sorely missed courtesy of the gastronomic equivalent of the taj mahal's he would bring to our gatherings.

The committee has decided that samples of Terry and Steves work will be displayed at the next annual exhibition in honour of our departed friends.

I would also like to take the opportunity to thank Andrew Carran for stepping in and taking Terry's class during his illness and while we sorted out another tutor. I realise this entailed a lot of extra travel time and effort on your part Andrew. Thank you.

Changes in regulations have compelled us to tighten up on our financial record keeping and we have new systems in place thanks to Toni Tomas our departing treasurer. We had issues this year with the timely delivery of 2017 financial report and our regular Auditors Staples and Rodway declining to continue auditing our accounts.

This year has seen a successful exhibition with brisk sales and the addition of a Saturday class run by Andrew Carran. Our kilns and facilities are running pretty much to capacity and I am really gratified to see an increase in the popularity of gas and raku firings.

We have also held many successful weekend workshop and I would remind members that the committee is always interested in hearing any suggestions concerning any particular pottery work they may be interested in.

I would like to thank the members of the committee and others such as past president Ngarita Wight, Lorraine Bonisch for their work which ensures we have regular newsletters, and ordered library, workshops and that events such as our annual exhibition are organised.

Darren Saunders
CPA President and Clay Master

YOUR COMMITTEE

**President /
Clay Stock Manager:**
Darren Saunders

**Vice President /
Membership Secretary:**
Trish Morant

Secretary:
Grace Campbell

Treasurer:
Ann Goldfarb

Committee:
Mary Lou Foate
Lorraine Bonisch
Ngarita Wight
Michael Michaels

Programme:
Lorraine Bonisch
Ngarita Wight

Newsletter Editor:
Lorraine Bonisch

Newsletter Distribution:
Mary Lou Foate

Tutors:
Margaret Ryley, 03 313 8406
margryley@gmail.com

Frederika Ernsten, 03 313 6509
frederika@cyberxpress.co.nz

Jane McCulla, 022 635 911
janemcculla@gmail.com

Andrew Carran, 021 0265 5395
jandacarran@vodafone.co.nz

Alyse Oliver, 021 110 3552
alyseoliver@hotmail.com

Michael Michaels, 021 0764 643
michael@mx2.nz

Mary Lou Foate, 03 355 5968

Akane Nakao, 021 165 2214

NEWS

CPA EXHIBITION CATALOGUES: LOOKING FOR OUR PAST

We are trying to fill in some gaps with our past and are would like to know if anyone has the following exhibition catalogues from CPA Exhibitions: 1967,1969,1974/75, 1979, 1981 x2 (January and March), 1982, 1984 1987,1988,1990, 1992 -1993, 1995-1997,2000-2003, 2006.

You may have a spare copy or like to donate your copy or scan and email a copy to our email address with the subject line: CPA Exhibition catalogue.

RUBBISH BINS

Due to ongoing issues with other groups filling our rubbish bins, we've had to move ours out of sight. You can now find these around the back of the club rooms.

CPA SOCIAL MEDIA

If you would like to share a photo of your work, an event or a snap of a class at the CPA please email us with your photo and a short caption. Please follow us and help us spread the word of pottery in Canterbury!
Find us at: @canterburypotters

Don't forget our Facebook page and members-only group. (On Facebook request to access this.) It's a great forum for questions, advice or swapping materials.

WELCOME TO OUR NEW MEMBERS

Barb Gaeth, Anna Meyers, Loreto Adams, Angie and Dan Facer, Wendy and Grace Reid, Serena Bayles, Melinda Maxwell, Jane Zusters, and Heather Mitchell.

Are you an exhibiting potter? Have you been to an interesting workshop or exhibition? Something to sell, or wanting to buy something? Have you read a great (pottery-related) book or seen something interesting online? We'd love to hear about it!

We put out a newsletter four times a year, and would appreciate your contributions. Contact Lorraine Bonisch at canterburypotters@gmail.com and don't forget photos.

CONGRATULATIONS!

Congratulations to two of our members, Takaaki Sakaguchi and Jacqui Overton, for being selected for the Emerging Practitioner in Clay Award by the Rick Rudd Foundation. The Exhibition of work at Quartz Museum of Studio Ceramics, Whanganui, runs from 25th September 2018 to 31 March 2019.

CLASS AND CLUB FIRINGS

If you are firing work at the clubrooms, please be careful where you place your work - work to be bisqued on the bisque shelves, and glazing on the glaze shelves. Seems obvious, but there have been some mix-ups recently and it is not always obvious to our hard working kiln coordinator. If you want something out of the ordinary, please leave a note explaining what you want.

On a similar note, please make sure the bases of your work are absolutely clean. If you are using wax, you still need to clean the glaze off it, or it will ruin our (expensive!) kiln shelves. Also, be careful with thick glazes which can run. If you are using glazes other than the club ones, you need to be very sure that they are not going to ruin our shelves. Please either test them first, and/or place a setter underneath.

MISSING LIBRARY BOOKS

Please remember that the CPA library books should not be removed from the club rooms. We are currently missing a few books so please have a look through your things and bring them back so all may enjoy them. The missing books are:

1. Pierce Clayton; *The Clay-Lovers Guide to Making Moulds*
2. Emmanuel Cooper; *The Potter's Book of Glaze Recipes*
3. SW Fisher; *English Pottery and Porcelain Marks*
4. Gerald Forty; *Image and Idea*
5. Houston Cripps; *Lucie Rie*
(this is the second time this book has gone missing)
6. Dingeman Korf; *Nederlands MAJOLICA*
7. Sarah Parr; *Clay*
8. Owen Rye; *Woodfire '86*
9. James Watkins; *Alternative Kilns and Firing Techniques*
10. We are missing a second copy of Greg Daly; *Glazes and Glazing techniques*.



Clay Carpet II, The Bridge Approach, 2014, Kate and Matt McLean

SELECTORS ANNOUNCED FOR THE CPA 45TH ANNUAL EXHIBITION

Our 45th annual exhibition is just a few months away. This year, we are delighted to announce that Matt and Kate McLean of Auckland have agreed to jointly select our exhibition. They will also each lead a one day demo/workshop at that time. Find out more about Kate and Matt on the next page.

Now is the time to be planning your exhibition work. If you haven't exhibited before, don't be shy! We have an award for the best first time exhibitor, so it is well worth your effort.

WANTED! EXHIBITION COMMITTEE MEMBERS

We would like you to consider joining us on the exhibition committee to learn the ropes.

We require two more people on our exhibition committee to join Trish Morant, Lorraine Bonisch and Ngarita Wight. We are a well oiled machine and would like to share our collective knowledge about this. For some of us this maybe the last year of our involvement.

We are looking for people who can work as a team, are organised, have a willingness to help out and take on some tasks. This is a rewarding part of being a member as the end result is our fabulous exhibition.

Email Lorraine, Ngarita or Trish at canterburypotters@gmail.com to find out more and offer a hand.

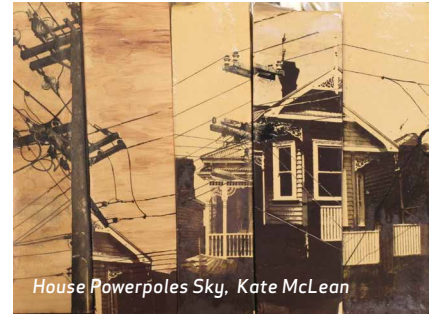


KATE MCLEAN

Kate McLean shares a studio in Auckland and has collaborated with husband Matt McLean on commissioned public ceramic works in the landscape. At Elam, Auckland University, she majored in printmaking, and now applies her interests in photography. Cycling in the city with a camera at the ready is a source of inspiration to her – subject matter is drawn from current interests and observations. The potential of clay forms combined with screen printing is endless and very exciting – clay offers a surface as well as structural form. It can receive an image, impressed, can be softened, distorted and stretched. The firing process is another exciting stage.



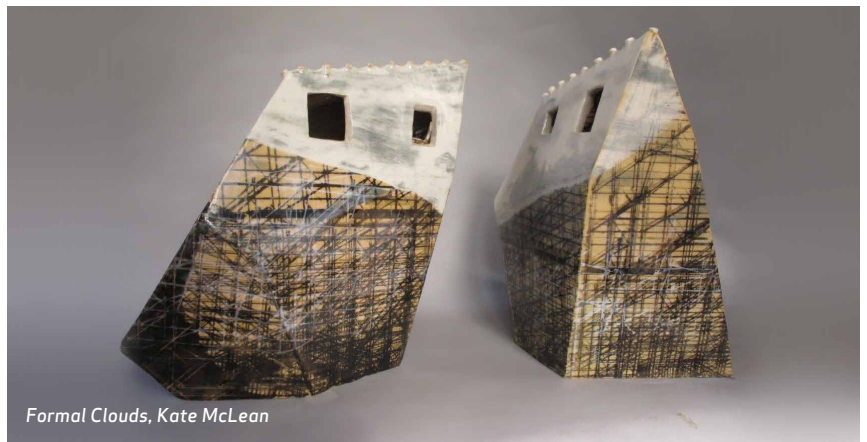
Tunnel, Kate McLean



House Powerpoles Sky, Kate McLean



Pool, Kate McLean



Formal Clouds, Kate McLean



MATT MCLEAN

Matt McLean attended Elam School of Fine Arts 1973 - 76. After graduating in sculpture, he worked with his wife, Kate, on many ceramic projects. Together, in the early '80s, they produced large, wood-fired garden pots for a living, gradually shifting their focus back to sculpture in the late '80s. They've exhibited and taught widely, mostly in the Auckland area, and received many awards. Recently Matt has worked on diverse smaller experimental works and large outdoor projects such as the Clarkes Lane Footbridge in Hobsonville which incorporates 3D ceramic pieces with silkscreen printed tiles.



Lost Land, Matt McLean



Landslide, Matt McLean



Ups In Downs, Matt McLean



A WORD FROM THE CPA GAS GROUP

by Michael Michaels

I was very excited about the opportunity to fire the CPA gas kiln for the for the group and the experience lived up to the expectation. Chris Murphy and I were ready to light the burners at 7am on the Sunday. After 10 minutes we still had no flame so decided to read the instructions! Lesson one: Always read the instructions FIRST.

I have done hundreds of gas firings using various gas kilns with differing designs and the CPA kiln, I'm pleased to say, was a great kiln to fire and behaved very well. The only thing I disagreed with from the instructions was with not adjusting the primary air intake. This is important is getting an efficient reduction. Otherwise it was a fairly simple operation.

We started reduction at around 900oc keeping it there for 45 minute until placing the atmosphere into neutral. At around 3pm cone 9 was down at which point we opened the primary air placing the kiln into oxidation for the last half an hour. At 3.45pm cone 11 was down so we shut it all down and went home for an agonising 24 hour wait until we could open the kiln to see the results.

I arrived early on the Monday afternoon only to find everyone already there waiting to open the kiln. Oh what self control to wait (all though I suspect they had already had a peak!). We got some great results and of

course some disappointing ones too. However, a great debrief by the team gave us much needed information for the next firing.

There were some great Celadons and ash glazes and we fired some of Steve Dench's jugs which came out very nicely. The Shino wasn't what we had wanted but this type of glaze does need a different firing cycle. Bridget's ash glazes must get the prize in my opinion. They may need a little tweaking to adjust the viscosity however. Well done Bridget!

We recently held another firing on the 14th July specifically for Shino with an attempt at getting some carbon trap effects. If any of you have done this type of firing we'd love to hear from you. From our research, I believe we need to go into reduction earlier, around cone 014 so the carbon gets trapped under the glaze when it seals. There's nothing like hands on experience though so if you would like to help out, please email the gas group at canterburypotters@gmail.com with gas firing in the subject heading or get in touch with me directly on 021 0764 643.

I would just like to thank the CPA gas group for taking me on board (like a bull dozer!), it's a very active and enthusiastic group and always welcoming to CPA members who want to give it a go.



WHAT'S BEEN HAPPENING AT THE CPA

GOLD FOIL CLUB SHARE NIGHT

Thank you to Holly Ramsey for demonstrating how to put gold onto ceramics at our April share-night.

Keep an eye on the events programme for more amazing workshops and share nights!





JULY

Mid-Winter Soup Night & Bowl Swap
Wednesday 25th, 6.30pm

Swap a bowl - bring a handmade bowl to swap - your own or someone else's, or just bring your own bowl to eat from. Soup and bread provided. Please bring dessert/cake.

AUGUST

CPA Committee Meeting
Wednesday 8th August, 6-7pm (ish)

Sharing Night - Litho Print Recap
Wednesday 15th, 6pm

All welcome. Please bring photocopied images and leatherhard slabs - A5 is a good size to work with.

SEPTEMBER

CPA Committee Meeting
Wednesday 12th September, 6-7pm (ish)

OCTOBER

CPA Committee Meeting
Wednesday 12th September, 6-7pm (ish)

CPA 45th Annual Exhibition Selection and Workshop
Watch this space! Details to come.

NOVEMBER

CPA Committee Meeting
Wednesday 7th November, 6-7pm (ish)

CPA 45th Annual Exhibition Opening
Wednesday 14th, 6pm
Join us for the opening of our annual exhibition at the Canterbury Museum Visitor Lounge. Exhibition runs 14th-25th November.

